



**St. Benedict's
Primary School**

Year 6 SATs Parents' Information

Aims of presentation:

- ▶ Set out the timeline of the upcoming SATs.
- ▶ Provide information about what SATs will be like
- ▶ Explain how parents can support children at home.

What are SATs?

Standardised Assessment Tests

- ▶ They provide information to the government about how schools are performing nationally.
- ▶ They provide information to secondary schools before children start in September.

What are SATs?

Standardised Assessment Tests

Date	Test	Duration
Monday 8 th May 2023	English Grammar, Punctuation and Spelling	45 mins plus spelling test
Tuesday 9 th May 2023	Reading	1 hour
Wednesday 10 th May 2023	Maths Arithmetic Paper 1 Reasoning Paper 2	30 mins 45 mins
Thursday 11 th May 2023	Reasoning Paper 3	45 mins

❖ **Teacher Assessments** for Writing and Science are also completed.

Grammar, Punctuation and Spelling

Paper 1 Grammar & Punctuation 50 marks

Paper 2 Spelling 20 marks

Total of 70 marks

36 marks to be at Expected Standard

55 to be at Greater Depth

Grammar, Punctuation and Spelling

5

Draw a line to match each **prefix** to the correct word to make a different word. Use each prefix only once.

Prefix

inter

dis

semi

anti

Word

approval

circle

social

action

7

Circle the correct word in each box to complete the sentences in **Standard English**.

Pass me

them

those

cartons, please.

You sang that song very

good.

well.

We always

did

done

our homework on time.

39

Rewrite the sentence below in the **passive**.
Remember to punctuate your answer correctly.

The wind damaged the fence.

1 mark

Grammar, Punctuation and Spelling

Spelling task

1. The dragon is an imaginary _____.
2. There was _____ food for everyone.
3. My little brother is in _____ class.
4. Playing in the snow made my fingers _____.

Spelling 11: The word is **curiously**.

Maria looked **curiously** at the box.

The word is **curiously**.

Spelling 12: The word is **courage**.

She found the **courage** to try something new.

The word is **courage**.

Spelling 13: The word is **disagreement**.

Jade and Jamie had a **disagreement**.

The word is **disagreement**.

Spelling 14: The word is **pyramid**.

Our class made a model **pyramid**.

The word is **pyramid**.

Spelling 15: The word is **excellent**.

The school provided an **excellent** education for its pupils.

The word is **excellent**.

Reading Paper

Total of 50 marks

29 marks to be at Expected
Standard

41 to be at Greater Depth



Reading Paper

1 hour

Veronika plays for "The Parsnips", a girls' football team. In the extract below, Veronika is running late and has just got back to her house. Her sister (Sofi), brother (Yuri) and uncle are all waiting for the arrival of the team bus to pick her up. She is very excited because this is the day of the team's biggest challenge.

THE PARSNIPS

Waiting for me by the gate was Sofi, her wispy hair stuck to her chubby cheeks, her bottom lip jutting out. "You didn't come when I called you! You didn't come and I didn't know where you were."

"I am here now, silly," I said, offering her my hand.

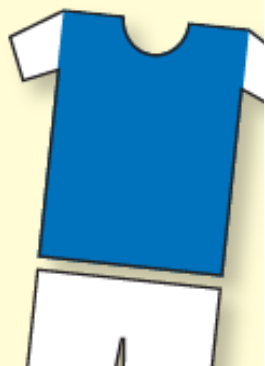
She yawned and slid her hand in mine. It was warm and sticky. "You didn't come," she repeated.

"Veronika, your boots," Uncle reminded me as I helped him and Sofi up the steps.

"Yes, Uncle, thank you."

"Always look after your boots. Look after your boots and they will look after you..."

Before I could reply, a banging on the front door startled all three of us. They were here!



Contents

The Parsnips

pages 4–6

My Circus Life

pages 8–9

A Traveller in Time

pages 10–11

2

What effect did the knock on the door have on Veronika and her family?

1 mark

3

(a) Who knocked on the door?

1 mark

(b) How can you tell this person was in a good mood?

1 mark

Maths Papers

Paper 1 Arithmetic 30 minutes 40 marks

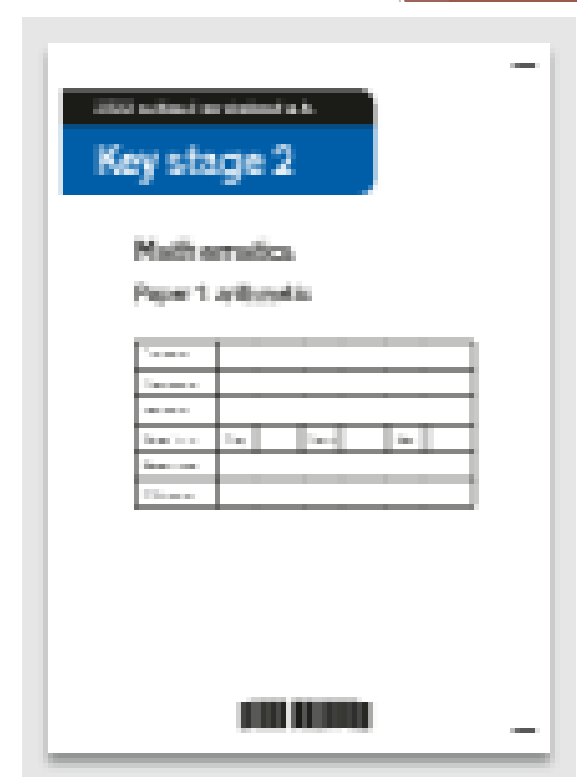
Paper 2 Reasoning 40 minutes 35 marks

Paper 3 Reasoning 40 minutes 35 marks

Total of 110 marks

58 marks to be at Expected Standard

96 to be at Greater Depth



34

$10 - 2\frac{1}{4} =$

☐

1 mark

35

$6 + 4 \div 2 =$

☐

1 mark

36

$\frac{4}{5} \times 400 =$

Paper 1

30 minutes to complete 36 questions

32

$2\frac{1}{2} - \frac{2}{3} =$

☐

1 mark

33

$$\begin{array}{r} 4078 \\ \times \quad 67 \\ \hline \end{array}$$

Show
your
method☐

2 marks

Reasoning papers 40 minutes to answer 25 questions

You can make green paint by mixing:

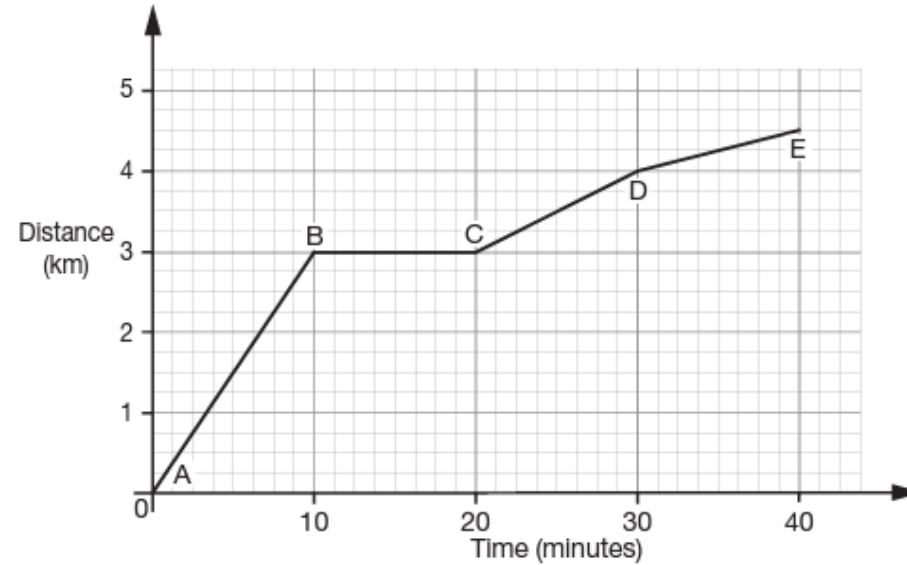
- 250 ml of blue paint
- 1,150 ml of yellow paint.

Stefan wants to make some of this green paint.

He uses 750 ml of **blue** paint.

How much **green** paint does he make?

Look at the graph below that shows Dev's bike ride.



Match each part of Dev's journey to the correct sentence.

A to B

Dev rests for 10 minutes.

B to C

Dev cycles 1 km in 10 minutes.

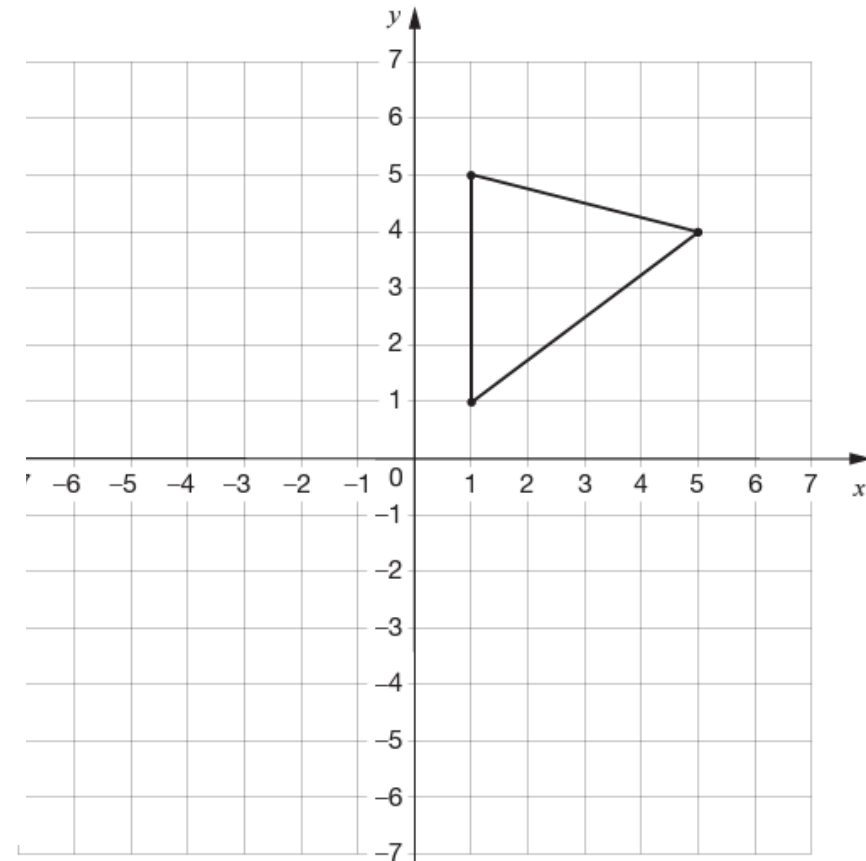
C to D

Dev cycles 3 km in 10 minutes.

The triangle is to be transformed on the grid as follows:

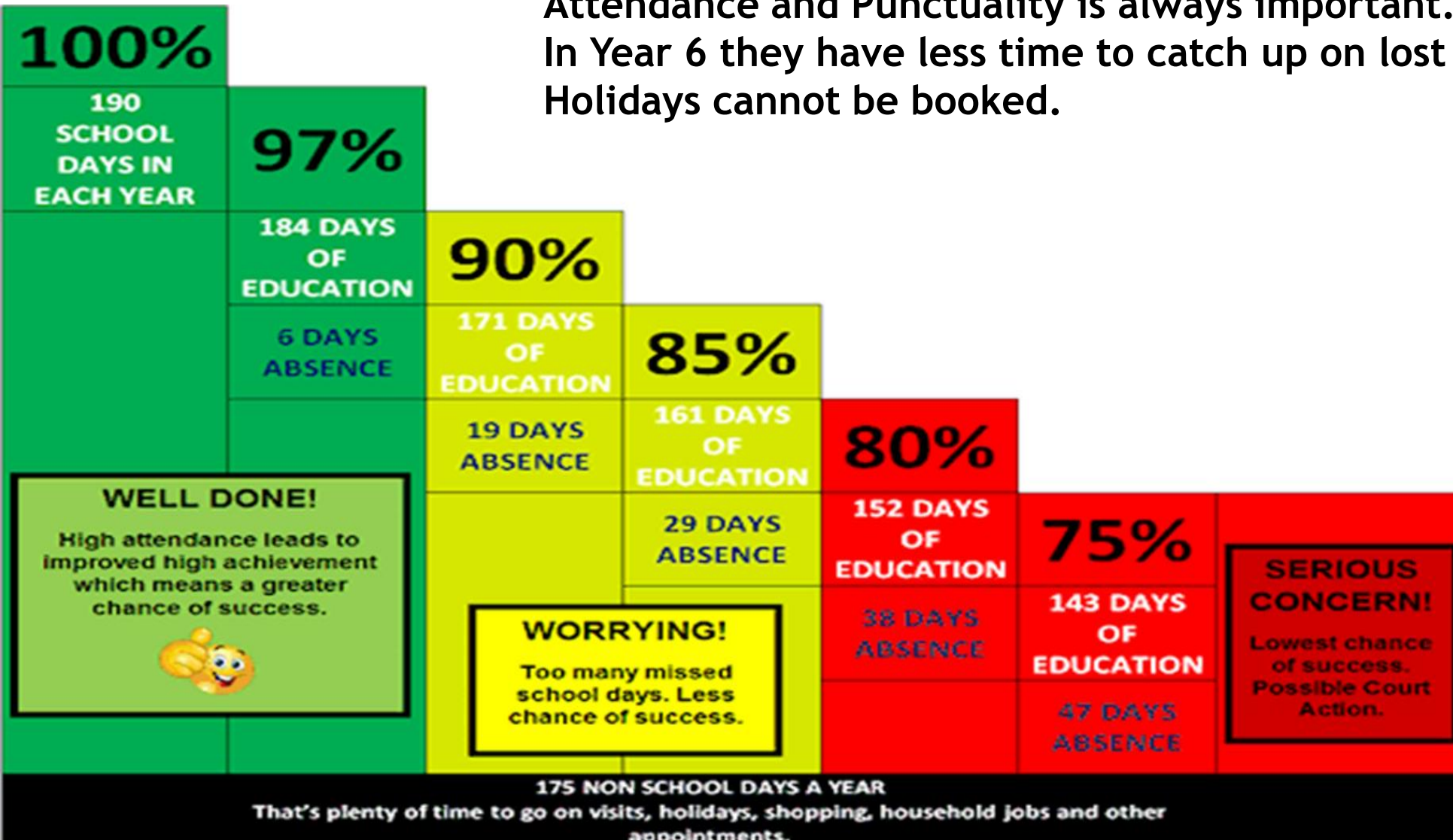
- First translate the shape 7 units down.
- Then reflect the **resulting** triangle in the **y**-axis.

Draw the new triangle on the grid after **each** transformation.



Attendance and Punctuality

Attendance and Punctuality is always important.
In Year 6 they have less time to catch up on lost learning.
Holidays cannot be booked.



Homework

- ▶ Bug Club reading
- ▶ TT Rockstars
- ▶ Maths task
- ▶ English Task
- ▶ Spelling List

Additional resources and revision

Revision resources are being provided in class for children to use in school.

If your child needs extra support, they are given extra support in school and may also be invited to an after school club.

If children are focussed in school and completing homework, they are doing everything they need to get ready for SATs and secondary school.

However, some parents may wish to have other resources at home.

<https://www.cgpbbooks.co.uk/primary-books/primary-sats-books>

Secondary School Places

A reminder to ensure you complete your application for secondary school by 31st October.

Link has been sent via School Ping.

https://www.birmingham.gov.uk/info/20119/school_admissions/1778/apply_for_a_secondary_school_year_7_place/3

If you are having difficulties, please speak to Miss Geraghty.